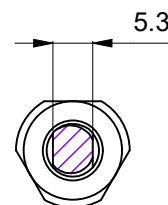
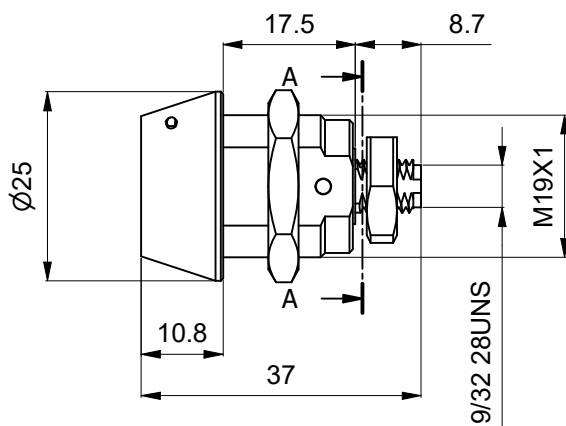
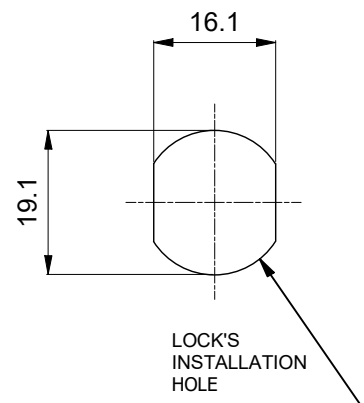
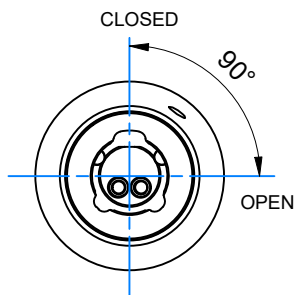


Cam locks Series 400-500 Model 425 RS7

Features:

- electromechanical high security cam lock with all the advantages of digital control
- without batteries and without connections to power lines
- resistant to openings with shock method
- resistant to drilling
- resistant to rotor extraction
- tamper resistant
- resistant to opening with strong force power key
- resistant to electric shock
- not attackable with opening methods used on mechanical locks (bumping,picking,ecc)



A-A