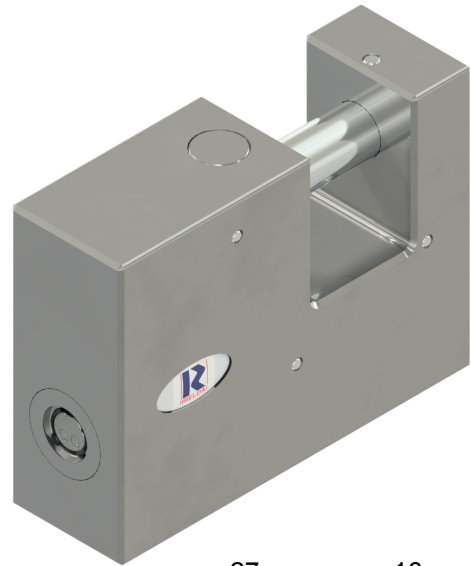


Series 800

## Model 801-95 SC RS7

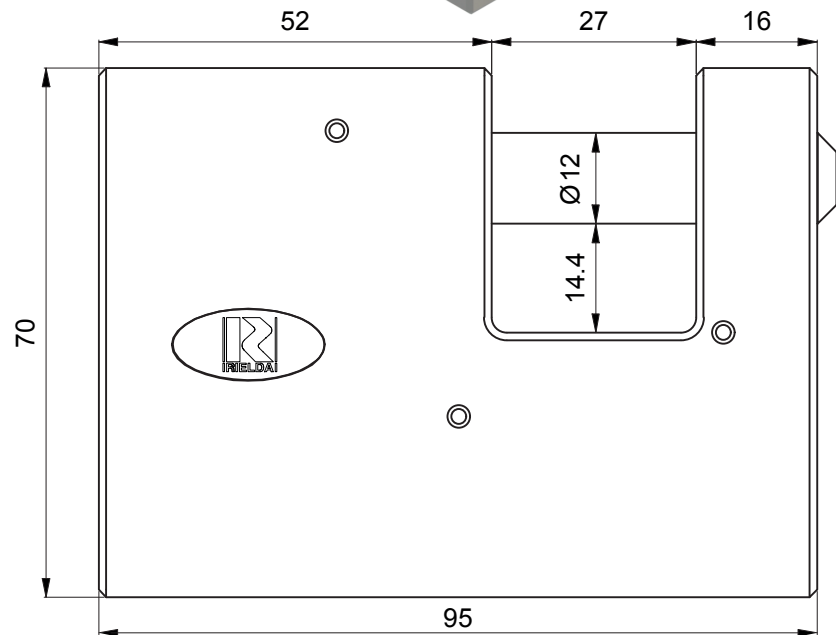
### Description

Electromechanical Re-Programmable security padlock with all the advantages of digital control, with 132° rotation for professional applications



### Technical specifications

- No batteries and no electrical line connections required
- Body material: hardened steel
- Resistant to rotor extraction
- Resistant to forced key opening
- Resistant to electrical discharges
- Rotation: 132° clockwise



### Resistant to:

- Bumping
- Picking
- Drilling

