

Series 1400

European profile cylinder lock RS3

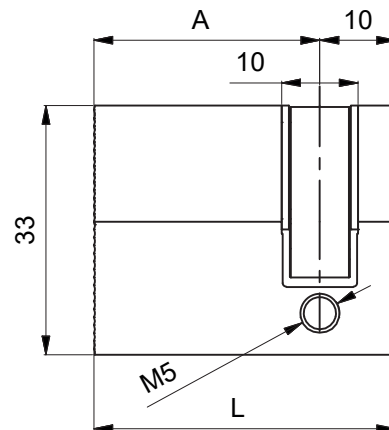
Description

Mechanically Re-Programmable
European profile cylinder lock for
professional applications



Technical specifications

- System: mechanically Re-Programmable with 62 500 different keys
- Body material: brass
- Key change: 180°
- 28° inclined cam for anti-pull function

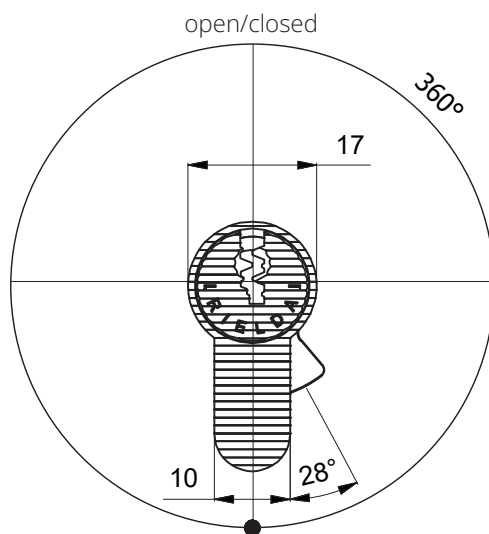


Resistant to:

- Bumping
- Picking
- Drilling

Available dimensions

L	A
41	31
45	35
50	40
55	45
60	50



RE-PROGRAMMING

